

2025 Summer Camps



 **GOD'S
WORD
COMES
NEAR**



S H E T E K
LUTHERAN MINISTRIES



Welcome to Shetek!

We look forward to having you join us this summer at Shetek Lutheran Ministries (SLM)! SLM is located on Lake Shetek and is an amazing place to connect with God, meet new people, and spend time outdoors! The Shetek Lutheran Ministries summer staff team is a group of dedicated young adults who are committed to providing campers with a fun faith filled week at camp!



God's Word Comes Near

The theme for summer 2025 is God's Word Comes Near. Campers will get to learn about how God's word comes to them in different ways and at times they may not expect it. As we dive into God's word, campers will learn more about themselves and the people they surround themselves with. "The word is near you, on your lips and in your heart."-Romans 10:8



The Mission of Shetek Lutheran Ministries

Where Christ renews and empowers.



Table of Contents

Camper Offerings	3
Cross-Generational Camps	4-5
Mini Camps	6-7
4th-6th Grade Camp	8
7th-9th Grade Camp	8
Explorer Camp	9
Confirmation Camp	10
10th-12th Grade Camp	11
CIT	12
S.O.S. & Agape	13
Day Camp	14
Youth & Adult Retreats	15
How to Register	16
Registration Forms	17-18
2025 Camp Schedule	19

Welcome Church Staff – We would like to extend an invitation to pastors and youth leaders to come spend time at camp this summer. If you would like to come spend a day at camp, join us for a meal, or stay for a full week, we welcome church staff free of cost to connect with youth who are attending camp from your congregation. If you plan to stay for part of the week or for the full week please let us know ahead of time so that we can reserve a place for you in our retreat center. We also welcome pastors to come and serve as the camp chaplain for a week. If you have any questions or are interested in volunteering feel free to contact us!



Shetek is ACA Accredited – We are committed to providing a safe and nurturing environment for all campers and guests. Shetek is accredited by the American Camp Association, meeting strict safety and other industry standards. No person will be discriminated against because of race, color, age, sex, disability, or national origin.



Shetek Lutheran Ministries is located in southwest Minnesota between Slayton and Marshall on Lake Shetek.

Camper Offerings - Every summer campers are able to help support two other ministries through their camper offering. For this upcoming summer campers will help support one global ministry and one local ministry. Globally, camper offerings will go to the Kacheptoror Village Library in Kenya to help support the procurement of children's books and learning materials. Locally, camper offerings will help support the Children's Home Society in Sioux Falls, SD. It will specifically go towards the Children's Home Shelter for Family Safety which empowers victims of domestic violence, sexual assault, and child abuse to overcome trauma and rebuild their lives!

CROSS-GENERATIONAL CAMPS

A.B.C. Camp

(Activities Building Campers)

Ages: Youth entering 1st-3rd Grade with a favorite adult

Dates: June 8-9 & Aug 3-4

Cost: \$140 per pair

Early Bird: Before April 1-\$120 per pair

ABC Camp is a 24-hour camper experience for youth and a favorite adult (parent, grandparent, aunt/uncle, etc). This is the perfect camp for youth to be introduced to camp and to help relieve those first-time jitters. While at

camp you will get to spend quality time with one another, share your faith, play games, spend time on the lake, and stay in the comfort of Lakota, our retreat center overnight. We look forward to seeing you at camp this summer!



Extended A.B.C. Camp

Ages: Youth entering 1st-3rd Grade with a favorite adult

Dates: July 13-15

Cost: \$275

Early Bird: Before April 1-\$250 per pair

New this year we are offering an extended version of our A.B.C.

Camp! This program will be for those entering 1st-3rd grade along with a favorite adult.

Extended A.B.C. will have an additional day, starting Sunday afternoon and will conclude with lunch on Tuesday. This will allow youth and their favorite adult to engage in more camp activities, spend more time learning about

God, and spend more time at camp with their favorite adult! We are excited to offer this extended program this summer!





Family Camp

Ages: All ages welcome!

Dates: July 18-20

Cost: \$200 adult; \$140 child-maximum cost \$505

Early Bird: Before April 1-\$185 adult; \$125 child-maximum \$465

As registration for family camp has risen we cannot guarantee your family will all stay in one room, as we only have a certain number of rooms that can accommodate 4-5 people. Thank you for understanding!

Come join us this summer to spend quality time as a family where you can leave all the cooking, accommodations, and activities up to Shetek! Adults will engage

in a Bible Study with a resource leader while the youth will dive into Bible study with the summer staff! There will be opportunities to participate in all of the camp activities such as swimming, boating, arts & crafts, games, and more!

Grandparent/Grandchild Camp (GPGC)

Ages: Geared for grades K-4, but all ages are welcome

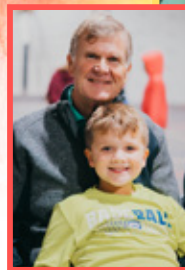
Dates: June 11-13, June 18-20, June 29-July 1, July 23-25, July 30-Aug 1, Aug 6-8

Cost: \$200 adult; \$140 child-maximum cost \$505

Early Bird: Before April 1-\$185 adult; \$125 child-maximum \$465

We can accommodate up to 4-5 people per room and charge \$200 per additional room.

GPGC provides a special opportunity for grandparents and grandchildren to spend quality time together and to share their faith with one another. During your time at camp you will stay in the comfort of Lakota, our retreat center. We look forward to being the place where grandparents/grandchildren can share their faith, spend quality time together, and enjoy outdoor activities!



MINI CAMPS

Mini Camp is an opportunity for youth to come and spend three days and two nights at camp! During their time at camp they will get to worship, swim, play camp games, and learn more about their faith!

2nd-3rd Grade

Ages: Entering 2nd-3rd Grade
Dates: June 29-July 1
Cost: \$245; Feb 1 Early Bird-\$220;
April 1 Early Bird-\$230

We are excited to welcome youth entering 2nd-3rd grade to camp! Join us this summer for faith filled fun out on Lake Shetek!



3rd-4th Grade

Ages: Entering 3rd-4th Grade
Dates: June 15-17, July 20-22, July 27-29
Cost: \$245; Feb 1 Early Bird-\$220;
April 1 Early Bird-\$230

Ready to spend a few nights away from home? We would love to welcome you to camp where you will build friendships, learn about God, and participate in all of the fun camp activities!

MINI CAMPS

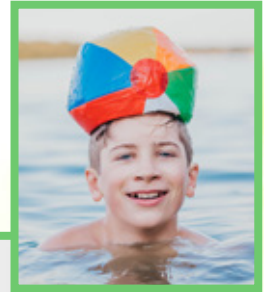
4th-6th Grade

Ages: Entering 4th-6th Grade

Dates: June 29-July 1

Cost: \$245; Feb 1 Early Bird-\$220; April 1 Early Bird-\$230

Join us this summer at Shetek for a mini week of camp! You will get to spend time outdoors doing different water activities, play games, spend time in community, and learn more about God! We cannot wait to see you this summer!



7th-9th Grade

Ages: Entering 7th-9th Grade

Dates: June 29-July 1

Cost: \$245; Feb 1 Early Bird-\$220; April 1 Early Bird-\$230

Try out our 7th-9th grade Mini Camp! This is a shortened camp experience where you will enjoy building friendships, Bible study, worship, games, and more!

Questions?

Call SLM (507) 763-3567

Register online www.shetek.org



4th-6th Grade Camp

Ages: Entering 4th-6th Grade

Dates: June 8-13, June 15-20,
July 13-18, July 20-25,
July 27-Aug 1, Aug 3-8

Cost: \$505; Feb 1 Early Bird-\$455;
April 1 Early Bird-\$480

Ready to spend a full week at camp?
Join us this summer to grow in your
faith, build friendships, spend time
outdoors on Lake Shetek, and play all
of the different camp games!



7th-9th Grade Camp

Ages: Entering 7th-9th Grade

Date: June 8-13, June 15-20, July 13-18,
July 20-25, July 27-Aug 1

Cost: \$505; Feb 1 Early Bird-\$455;
April 1 Early Bird-\$480

Come out to camp this summer to spend time in
community with peers! You will get to connect
with others, share your faith, worship in a special
prayer service, spend a night camping outside,
and participate in all the other fun camp activities!



Explorer Camp

Ages: Entering 5th-8th Grade

Dates: Aug 3-8

Cost: \$525; Feb 1 Early Bird-\$475; April 1 Early Bird-\$500

Explorer Camp offers youth the opportunity to explore a hobby while also getting to be a part of all the other fun camp activities!



Fishing

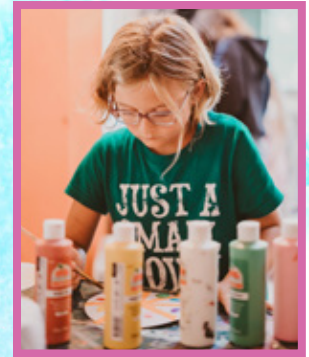
Join us this summer for our new Explorer track where you will learn about the fish in Lake Shetek and enjoy fishing out on the boat!



We are looking at expanding our options for future summers and we would love your input! If you have any ideas or thoughts on tracks that youth would be interested in for Explorer Camp, scan the QR code and let us know!

Arts & Crafts

If you love arts and crafts, join us this summer! You will get to spend time trying out different crafts and will be able to let your creative skills come to life!



Guitar - Whether you are a beginner or already have some experience, you will get to learn and practice the guitar! You will have the opportunity to show everyone what you learned at the end of the week! If you don't have a guitar, but are interested do not hesitate to sign up! Camp has guitars you can borrow for the week!



Confirmation Camp

Ages: Attend as a confirmation group with your confirmation leader(s)

Dates: June 8-13 & July 27-Aug 1

Cost: \$505; Feb 1 Early Bird-\$455; April 1 Early Bird-\$480

While attending Confirmation Camp you will get to experience the elements and activities of our 7th-9th Grade Camp such as worship, outcamp, swimming, boating, games and more! Confirmation Camp is a unique opportunity for confirmation groups to come out to camp and dive deeper into your faith with their confirmation leader!



OFFSITE OPPORTUNITIES

Flambeau River Ramble

Ages: Entering 10th-12th Grade

Date: July 27-Aug 1

Cost: \$525

*Subsidized by the Shetek Endowment Fund.

Come join Shetek this summer on a high adventure trip down the river through our partnership with Camp Amnicon! Sign up early - Maximum of 9 participants

Located in the heart of Wisconsin, the Flambeau River is considered one of the best paddling rivers in the country. The river is wide and the current starts out slow, giving novice paddlers the chance to learn and practice their skills before encountering small riffles and rapids. The rapids grow progressively larger, culminating in a really fun set of Class II rapids on the last day, right where we pick you up. Along the way you'll enjoy a beautiful forest and abundant wildlife.



Fun Fact: The Flambeau River got its name from the French Fur Traders (Voyageurs) who watched the native people fishing along the river using flaming torches. On the first day, you meet your guides and learn everything you need to know, such as how to pack and what to do if your canoe tips, so that you feel prepared to take on challenges of the week. That evening we'll do a big campfire at sunset on our sandy beach of Lake Superior. The next morning, we drive you out to the Flambeau and the adventure begins! You spend each day paddling down the river, setting up camp each afternoon. There is time to swim, explore, and play each afternoon before cooking dinner over the fire. You end each evening with a meaningful community conversation around the fire. The trip culminates in a campfire and closing ceremony back at our sandy beach on Lake Superior.



Counselor in Training

(C.I.T.)

Ages: Entering 10th-12th Grade

Date: June 8-13

Cost: \$200 *Special Discounted Fee!

Subsidized by the Shetek Endowment Fund.

Looking to build your leadership skills while still getting a fun camp experience? Join us this summer for our Counselor in Training Program! During your week of training you will learn a variety of leadership and communication skills that will not only put you on the path to be a future Camp Counselor, but will also help prepare you for college or your future career! While you are at camp you will also get to spend time bonding with other CITs, learn about God, and enjoy all of the fun activities camp has to offer! After you have gone through the training, you can come back to camp for an additional week(s) at no cost. You will be paired up with a Shetek counselor and will get to help them with the cabin group that week! This will give you the opportunity to use the skills you learned during your training and will allow you to build connections with the campers in your cabin. We are excited to have you join us this summer!

Agape

Ages: 14 years+

Date: July 6-11

Cost: Free, volunteer experience

Serve as an Agape this summer by helping meet the needs of campers with different developmental and/or physical special needs. You will be assisting counselors throughout the week by helping campers enjoy a week at camp. During the week you will spend time assisting campers with their daily tasks, doing camp activities with them, ensuring the campers see the nurses when they need to, enjoy conversations with campers, and impact the lives of others. If you have a passion for serving and caring for others, join us this summer as an Agape!

Register online or contact Shetek for a special form.



Sharing Our Services

(S.O.S.)

Ages: All

Date: July 7-11

Cost: \$400 *Subsidized by the Shetek Endowment Fund



All are welcome to S.O.S. Camp! This camp is open to people of all ages with developmental and/or physical special needs. Camp activities are made accessible and include a fun camp event each night including a talent show, beach party, carnival, and dance. An RN is onsite daily to dispense medications and to attend to camper questions and concerns.

Register online or contact Shetek for more information.

Day Camp

Ages: Entering K-6th Grade

Cost: \$55 per camper, Minimum of 20 campers

Let us bring camp to your community!

Day camp is a Christ-centered camp experience brought to your community, it is intended to enhance Christian education programming for your congregation's youth. Shetek counselors are trained young adults striving to share God's word with others and to provide youth a fun-filled week. Help bring camp to your community by hosting an SLM Day Camp!

Contact Shetek for more information: lexie@shetek.org



YOUTH & ADULT RETREATS

Shetek Lutheran Ministries is open year round for people to retreat. Come grow in your faith and spend time in God's creation. The Lakota Retreat Center, camper cabins, and the Eagle's Nest Lodge are available for family reunions, church groups, crafting groups, youth retreats, meetings, and more! We also welcome many different school groups to camp that participate in programs offered by Shetek Environmental Learning Center. For more information about what programs the Shetek Environmental Learning Center offers visit our website www.shetek.org.

Below you can find dates for upcoming retreats/events that Shetek Lutheran Ministries has available throughout the year! If you would like more information about a specific retreat or event visit our website www.shetek.org or give us a call 507-763-3567!



2025 Calendar of Events

Quilt & Craft Retreat: January 15-19, 2025

Confirmation Retreat: March 14-15, 2025

Confirmation Retreat: April 11-12, 2025

Quilt & Craft Retreat: April 21-24, 2025

First Day of Camp: June 8, 2025

Golf Tournament: June 23, 2025

Quilt Auction Preview: June 27, 2025

Quilt Auction: June 28, 2025

Octoberfest: October 17-18, 2025

Scandinavian Dinner/Annual Meeting:
December 7, 2025

How to Register:

- 1) **Choose which program and week you'd like to attend camp.** Please Register for the grade you are entering for the 2025-26 school year. We encourage you to register early, as weeks and programs do fill up.
- 2) **Register using one of the following two ways:**
 - 1) Register online at www.shetek.org
OR
 - 2) Complete the registration form and return with a deposit to SLM,
14 Keeley Island Dr., Slayton, MN 56172
*An initial deposit is required for all programs. This deposit is deducted from the total camp fee and is non-refundable if a cancellation is less than 30 days prior to the program.
\$75 deposit per camper for all onsite programs
\$100 for the Flambeau River Trip
- 3) Upon verifying your registration, SLM will send you a confirmation email. Closer to the start of camp you will receive an email that contains further information regarding your camp program including a list of what to bring, arrival information, etc. This information can also be found at www.shetek.org under our Quick Links, Documents section.

Discounts Available

- 1) **Camperships** are available! Shetek wants everyone to have the opportunity to experience a week at camp! Financial assistance through Shetek is made possible because of many generous individuals and congregations who value the camp experience and contribute to the SLM campership fund. Many congregations also provide financial assistance to members who wish to attend camp at Shetek. Please contact your congregation and Shetek for more information and to receive Shetek's campership form, which is simple and confidential.
- 2) **Early Bird Discount:** Register Early! For most full and partial week programs, the cost is less if you register before April 1, 2025 and even less if you register before February 1, 2025.
- 3) **Sibling Discount:** Each sibling will receive \$25 off their registration for their full or partial week program.
- 4) **Invite a Friend!:** Invite a friend who has never attended a Shetek program before and you will both receive \$50 off of each registration. Be sure to have your friend write your name on the "invited by" line on their registration form.
- 5) **Attend Another Program:** Register for multiple full or partial week programs at Shetek this summer and receive \$50 off each additional program.

Questions?

Call SLM (507) 763-3567

Register Online: www.shetek.org



Cross-Generational Registration

Please Print - You can also register online at www.shetek.org

Family/Group Name:

Address:

City:

State:

Zip:

Home Phone:

Work Phone:

Cell Phone:

Email:

Home Church Name & City:

Amount Paid by
Church:

Names of Those Attending:

Children's Address & Date of Birth:

Indicate any special physical, dietary or emotional needs here:

CAMP INFORMATION:

Camp Program:

DATES:

1st Choice:

2nd Choice:

PAYMENT INFORMATION:

Payment Type: Cash Check

If you wish to pay by credit card, please call our office at 507-763-3567

As participants in a Cross-Generational program, we agree that the camp or its personnel will not be held responsible for accidents arising while at camp. I also give permission for the use of photographs, video and electronic images including myself or those registered to attend camp with me.

Adult Signature:

Date:



Camper Registration

Please Print - You can also register online at www.shetek.org

Last Name:		First Name:	
Address:			
City:	State:	Zip:	
Gender:	Age:	Birthdate:	Grade in 2025-2026:
Parent or Guardian Name(s):			
Home Phone:		Work Phone:	
Cell Phone:		Email:	
Emergency Contact:			
Relationship:		Emergency Contact Phone:	
Home Church Name & City:		Amount Paid by Church:	

Indicate any special physical, dietary or emotional needs here:

CAMP INFORMATION:

Explorer Camp Track:

DATES:

1st Choice:	2nd Choice:
1 or 2 Cabin Mates:	

(Up to two cabin mates can be requested when they EACH request each other! We do our best to grant your rooming request. Note: Cabin assignments are made prior to arrival at camp.)

Invited By (if applicable):

Siblings Attending (if applicable):

PAYMENT INFORMATION:

Payment Type: _____ Cash _____ Check

If you wish to pay by credit card, please call our office at 507-763-3567

Our child has permission to take part in all camp activities under supervision, and we agree that the camp or its personnel will not be held responsible for accidents arising while at camp. I also give permission for the use of photographs, video, and electronic images including my child or family in camp promotions.

Adult Signature:

Date:

2025 Summer Camp Schedule

	WEEK	2 - 4 GRADE	4 - 6 GRADE	7 - 9 GRADE	10 - 12 GRADE	SPECIALTY	CROSS-GENERATIONAL	OFFSITE OPPORTUNITIES
1	June 8 - 13		4th - 6th Grade Camp	Confirmation Camp 7th - 9th Grade Camp	CIT Training		ABC Camp June 8 - 9 GPGC June 11 - 13	
2	June 15 - 20	3rd - 4th Mini June 15 - 17	4th - 6th Grade Camp	7 - 9th Grade Camp			GPGC June 18 - 20	
3	June 22 - 27	4H CAMP						
4	June 29 - July 1	2nd - 3rd Mini June 29 - July 1	4th - 6th Mini June 29 - July 1	7th - 9th Mini June 29 - July 1			GPGC June 29 - July 1	
5	July 6 - 11				Agape - Ages 14 + July 6 - 11	SOS Camp July 7 - 11		
6	July 13 - 18		4th - 6th Grade Camp	7 - 9th Grade Camp			Extended ABC Camp July 13 - 15 Family Camp July 18 - 20	
7	July 20 - 25	3rd - 4th Mini July 20 - 22	4th - 6th Grade Camp	7 - 9th Grade Camp			GPGC July 23 - 25	
8	July 27 - Aug 1	3rd - 4th Mini July 27 - 29	4th - 6th Grade Camp	Confirmation Camp 7th - 9th Grade Camp			GPGC July 30 - August 1	10th-12th Flambeau River Ramble
9	August 3 - 8		4th - 6th Grade Camp			Explorer Camp (5th - 8th Grade)	ABC Camp Aug 3 - 4 GPGC Aug 6 - 8	



14 Keeley Island Dr.
Slayton, MN 56172
www.shetek.org
(507) 763-3567

NON-PROFIT ORG.
U.S. POSTAGE
PAID
PERMIT #14
SLAYTON, MN 56172

Return Service Requested

